

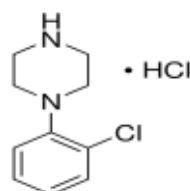
3050 Spruce Street, Saint Louis, MO 63103, USA

Website: www.sigmaldrich.comEmail USA: techserv@sial.comOutside USA: eurtechserv@sial.com

Product Specification

Product Name:
1-(2-Chlorophenyl)piperazine monohydrochloride - 95%

Product Number: C67605
CAS Number: 41202-32-8
MDL: MFCD00012761
Formula: C₁₀H₁₃ClN₂ · HCl
Formula Weight: 233.14 g/mol



TEST

Specification

| | |
|---------------------|---|
| Appearance (Color) | White to Beige |
| Appearance (Form) | Powder or Crystals or Powder with Chunk(s) or Crystals with Chunk(s) |
| Proton NMR Spectrum | Conforms to Structure |
| Carbon | 48.7 - 54.4 % |
| Nitrogen | 11.3 - 12.7 % |
| Purity (HPLC) | ≥ 94.5 % |

Specification: PRD.1.ZQ5.10000029585

Sigma-Aldrich warrants, that at the time of the quality release or subsequent retest date this product conformed to the information contained in this publication. The current Specification sheet may be available at Sigma-Aldrich.com. For further inquiries, please contact Technical Service. Purchaser must determine the suitability of the product for its particular use. See reverse side of invoice or packing slip for additional terms and conditions of sale.