

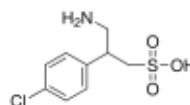
3050 Spruce Street, Saint Louis, MO 63103, USA

Website: [www.sigmaldrich.com](http://www.sigmaldrich.com)Email USA: [techserv@sial.com](mailto:techserv@sial.com)Outside USA: [eurtechserv@sial.com](mailto:eurtechserv@sial.com)

## Product Specification

Product Name:  
Saclofen - solid

Product Number: **S166**  
CAS Number: 125464-42-8  
MDL: MFCD00216817  
Formula: C<sub>9</sub>H<sub>12</sub>ClNO<sub>3</sub>S  
Formula Weight: 249.71 g/mol

**TEST****Specification**

Appearance (Color)	White to Off-White
Appearance (Form)	Powder
Proton NMR spectrum	Conforms to Structure
Solubility	Conforms
Soluble in 0.1M NaOH at 20 mg/ml	
Carbon	42.2 - 44.4 %
Nitrogen	5.3 - 5.8 %
Purity (HPLC)	≥ 98 %

Specification: PRD.0.ZQ5.10000042800

Sigma-Aldrich warrants, that at the time of the quality release or subsequent retest date this product conformed to the information contained in this publication. The current Specification sheet may be available at [Sigma-Aldrich.com](http://Sigma-Aldrich.com). For further inquiries, please contact Technical Service. Purchaser must determine the suitability of the product for its particular use. See reverse side of invoice or packing slip for additional terms and conditions of sale.