

3050 Spruce Street, Saint Louis, MO 63103, USA

Website: [www.sigmaldrich.com](http://www.sigmaldrich.com)Email USA: [techserv@sial.com](mailto:techserv@sial.com)Outside USA: [eurtechserv@sial.com](mailto:eurtechserv@sial.com)

## Product Specification

Product Name:

Sucrose - analytical standard, for enzymatic assay kit SCA20

**Product Number:****S1174**

CAS Number:

57-50-1

MDL:

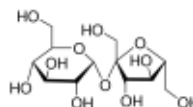
MFCD00006626

Formula:

C<sub>12</sub>H<sub>22</sub>O<sub>11</sub>

Formula Weight:

342.30 g/mol

**TEST****Specification**

Appearance (Color)

White

Appearance (Form)

Powder

Suitability

Suitable

Suitable for use in SCA-20 Sucrose Assay Kit

Purity (GC)

≥ 99.5 %

Specification: PRD.1.ZQ5.10000042473

Sigma-Aldrich warrants, that at the time of the quality release or subsequent retest date this product conformed to the information contained in this publication. The current Specification sheet may be available at [Sigma-Aldrich.com](http://Sigma-Aldrich.com). For further inquiries, please contact Technical Service. Purchaser must determine the suitability of the product for its particular use. See reverse side of invoice or packing slip for additional terms and conditions of sale.