

3050 Spruce Street, Saint Louis, MO 63103, USA

Website: [www.sigmaaldrich.com](http://www.sigmaaldrich.com)

Email USA: [techserv@sial.com](mailto:techserv@sial.com)

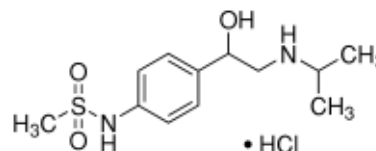
Outside USA: [eurtechserv@sial.com](mailto:eurtechserv@sial.com)

## Product Specification

Product Name:  
(±)-Sotalol hydrochloride - ≥98% (TLC), powder

Product Number: **S0278**  
CAS Number: 959-24-0

Formula: C<sub>12</sub>H<sub>20</sub>N<sub>2</sub>O<sub>3</sub>S·HCl  
Formula Weight: 308.8 AMU



### TEST

### Specification

Appearance (Form)	Powder
Appearance (Colour)	White to White w/ Yellow Cast
Solubility (Solvent)	Water
Solubility (Conc)	19.60 - 20.40 mg/ml
Solubility (Turbidity)	Clear
Solubility (Color)	Colorless
Elemental Anal. (%C anhydrous)	46.17 - 47.17 %
Elemental Anal. (%N anhydrous)	8.67 - 9.47 %
Purity (TLC)	≥ 98.00 %
NMR (Solvent)	DMSO-d <sub>6</sub>
Identity by NMR	Consistent
NMR (Residual Solvent 1)	Ethanol
NMR (% Solvent 1)	≤ 1.00 %
Recommended Retest Period	-----
3 Years	

Specification: PRE.0.ZQ5.10000001480

Sigma-Aldrich warrants, that at the time of the quality release or subsequent retest date this product conformed to the information contained in this publication. The current Specification sheet may be available at Sigma-Aldrich.com. For further inquiries, please contact Technical Service. Purchaser must determine the suitability of the product for its particular use. See reverse side of invoice or packing slip for additional terms and conditions of sale.