

3050 Spruce Street, Saint Louis, MO 63103, USA

Website: www.sigmaldrich.com

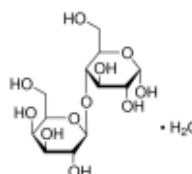
Email USA: techserv@sial.com

Outside USA: eurtechserv@sial.com

Product Specification

Product Name:
 α -Lactose monohydrate - BioXtra, $\geq 99\%$ total lactose basis (GC)

Product Number: L8783
CAS Number: 5989-81-1
MDL: MFCD00150747
Formula: C₁₂H₂₂O₁₁ · H₂O
Formula Weight: 360.31 g/mol



TEST	Specification
Purity (GC)	$\geq 99\%$
Total-Lactose	
Impurity	$\leq 4\%$
Beta-Lactose	
Appearance (Color)	White to Off White
Appearance (Form)	Powder
Solubility (Color)	Colorless to Very Faint Yellow
Solubility (Turbidity)	Clear
1 M in H ₂ O	
Ammonia (NH ₄)	$\leq 0.05\%$
by AMME	
Residue on ignition	Pass
< or = 0.1%	
Chloride Content	$\leq 0.05\%$
by IONX	
Sulfate	$\leq 0.05\%$
by IONX	
Insoluble matter	$\leq 0.1\%$
Aluminum (Al)	$\leq 0.0005\%$
Lead (Pb)	$\leq 0.001\%$
Phosphorus (P)	$\leq 0.01\%$
Calcium (Ca)	$\leq 0.005\%$
Magnesium (Mg)	$\leq 0.0005\%$
Sodium (Na)	$\leq 0.005\%$

Sigma-Aldrich warrants, that at the time of the quality release or subsequent retest date this product conformed to the information contained in this publication. The current Specification sheet may be available at Sigma-Aldrich.com. For further inquiries, please contact Technical Service. Purchaser must determine the suitability of the product for its particular use. See reverse side of invoice or packing slip for additional terms and conditions of sale.

3050 Spruce Street, Saint Louis, MO 63103, USA

Website: www.sigmaaldrich.comEmail USA: techserv@sial.comOutside USA: eurtechserv@sial.com

Product Specification

Product Name:

 α -Lactose monohydrate - BioXtra, $\geq 99\%$ total lactose basis (GC)**Product Number:****L8783**

CAS Number:

5989-81-1

MDL:

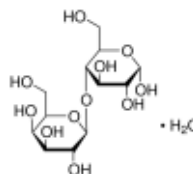
MFCD00150747

Formula:

C₁₂H₂₂O₁₁ · H₂O

Formula Weight:

360.31 g/mol



TEST	Specification
Iron (Fe)	≤ 0.0005 %
Copper (Cu)	≤ 0.0005 %
Zinc (Zn)	≤ 0.0005 %
Potassium (K) by AA	≤ 0.02 %

Specification: PRD.1.ZQ5.10000032161

Sigma-Aldrich warrants, that at the time of the quality release or subsequent retest date this product conformed to the information contained in this publication. The current Specification sheet may be available at Sigma-Aldrich.com. For further inquiries, please contact Technical Service. Purchaser must determine the suitability of the product for its particular use. See reverse side of invoice or packing slip for additional terms and conditions of sale.