

3050 Spruce Street, Saint Louis, MO 63103, USA

Website: www.sigmaldrich.comEmail USA: techserv@sial.comOutside USA: eurtechserv@sial.com

Product Specification

Product Name:

1,2-Dichloroethane - anhydrous, 99.8%

Product Number:

284505

CAS Number:

107-06-2

MDL:

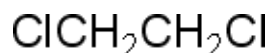
MFCD00000963

Formula:

C₂H₄Cl₂

Formula Weight:

98.96 g/mol



TEST	Specification
Appearance (Color)	Colorless
Appearance (Form)	Liquid
Infrared spectrum	Conforms to Structure
Purity (GC)	≥ 99.75 %
Water (by Karl Fischer)	≤ 0.003 %
Note	-----
For 100 mL unit size, water content may exceed above specification; not to exceed 0.005%.	
Residue on Evaporation	≤ 0.0003 %

Specification: PRD.1.ZQ5.10000016583

Sigma-Aldrich warrants, that at the time of the quality release or subsequent retest date this product conformed to the information contained in this publication. The current Specification sheet may be available at Sigma-Aldrich.com. For further inquiries, please contact Technical Service. Purchaser must determine the suitability of the product for its particular use. See reverse side of invoice or packing slip for additional terms and conditions of sale.