

3050 Spruce Street, Saint Louis, MO 63103, USA

Website: www.sigmaldrich.comEmail USA: techserv@sial.comOutside USA: eurtechserv@sial.com

Product Specification

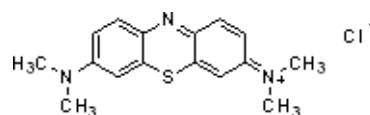
Product Name:
Methylene Blue solution - 1.4 % (w/v) in 95% ethanol

Product Number: **1808**

MDL: MFCD00012111

Formula: C₁₆H₁₈ClN₃S

Formula Weight: 319.85 g/mol



TEST	Specification
------	---------------

Appearance (Color) Dark Blue	Conforms
Appearance (Form)	Solution
Appearance (Turbidity) Essentially free of precipitate/particles	Clear
Performance When performance testing is done according to Sigma-Aldrich Procedure No. 181, the mature T-cells have a distinct focal red dot.	Conforms
Expiration Date Period 48 months	-----

Specification: PRD.3.ZQ5.10000027253

Sigma-Aldrich warrants, that at the time of the quality release or subsequent retest date this product conformed to the information contained in this publication. The current Specification sheet may be available at Sigma-Aldrich.com. For further inquiries, please contact Technical Service. Purchaser must determine the suitability of the product for its particular use. See reverse side of invoice or packing slip for additional terms and conditions of sale.