

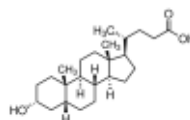
3050 Spruce Street, Saint Louis, MO 63103, USA

Website: www.sigmaaldrich.comEmail USA: techserv@sial.comOutside USA: eurtechserv@sial.com

Product Specification

Product Name:
Lithocholic acid - $\geq 95\%$

Product Number: L6250
CAS Number: 434-13-9
MDL: MFCD00003682
Formula: C₂₄H₄₀O₃
Formula Weight: 376.57 g/mol



TEST	Specification
Appearance (Color)	White to Off-White
Appearance (Form)	Powder
Purity (Titration by NaOH) 0.1 M	$\geq 95\%$
Purity (TLC)	$\geq 95\%$

Specification: PRD.1.ZQ5.10000048342

Sigma-Aldrich warrants, that at the time of the quality release or subsequent retest date this product conformed to the information contained in this publication. The current Specification sheet may be available at Sigma-Aldrich.com. For further inquiries, please contact Technical Service. Purchaser must determine the suitability of the product for its particular use. See reverse side of invoice or packing slip for additional terms and conditions of sale.