

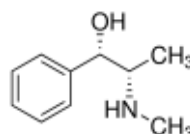
3050 Spruce Street, Saint Louis, MO 63103, USA

Website: [www.sigmaaldrich.com](http://www.sigmaaldrich.com)Email USA: [techserv@sial.com](mailto:techserv@sial.com)Outside USA: [eurtechserv@sial.com](mailto:eurtechserv@sial.com)

## Product Specification

Product Name:  
(1S,2S)-(+)-Pseudoephedrine - 98%

**Product Number:** 287636  
**CAS Number:** 90-82-4  
**MDL:** MFCD00064256  
**Formula:** C<sub>10</sub>H<sub>15</sub>NO  
**Formula Weight:** 165.23 g/mol



### TEST

### Specification

Appearance (Color)	White
Appearance (Form)	Powder or Crystal or Chunk(s)
Proton NMR Spectrum	Conforms to Structure
Carbon	70.9 - 74.5 %
Nitrogen	8.2 - 8.8 %
Optical Rotation c = 0.6%; Ethanol	49.0 - 55.0 deg
Purity (GC)	≥ 97.5 %

Specification: PRD.0.ZQ5.10000057947

Sigma-Aldrich warrants, that at the time of the quality release or subsequent retest date this product conformed to the information contained in this publication. The current Specification sheet may be available at [Sigma-Aldrich.com](http://Sigma-Aldrich.com). For further inquiries, please contact Technical Service. Purchaser must determine the suitability of the product for its particular use. See reverse side of invoice or packing slip for additional terms and conditions of sale.