

3050 Spruce Street, Saint Louis, MO 63103, USA

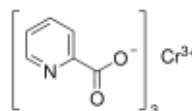
Website: www.sigmaaldrich.comEmail USA: techserv@sial.comOutside USA: eurtechserv@sial.com

Product Specification

Product Name:
Chromium picolinate - ≥98% (HPLC)

Product Number: **C4124**
CAS Number: 14639-25-9

Formula: C₁₈H₁₂N₃O₆Cr
Formula Weight: 418.3 g/mol



| TEST | Specification |
|--|-------------------------------|
| Appearance (Color) | Light Red to Very Dark Purple |
| Appearance (Form) | Powder |
| Infrared spectrum | Conforms to Structure |
| Loss on Drying | ≤ 5 % |
| Solubility (Color) | Colorless to Light Red |
| Solubility (Turbidity) | Clear |
| 0.6 mM in 10 mM Sodium Phosphate, pH 7.0 | |
| % Chromium | 11.8 - 13.1 |
| Dry Basis | |
| Purity (HPLC) | ≥ 98 % |

Specification: PRD.0.ZQ5.10000049203

Sigma-Aldrich warrants, that at the time of the quality release or subsequent retest date this product conformed to the information contained in this publication. The current Specification sheet may be available at Sigma-Aldrich.com. For further inquiries, please contact Technical Service. Purchaser must determine the suitability of the product for its particular use. See reverse side of invoice or packing slip for additional terms and conditions of sale.