

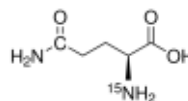
3050 Spruce Street, Saint Louis, MO 63103, USA

Website: www.sigmaaldrich.comEmail USA: techserv@sial.comOutside USA: eurtechserv@sial.com

Product Specification

Product Name:
L-Glutamine-(amine-¹⁵N) - 98 atom % ¹⁵N

Product Number: 486809
CAS Number: 80143-57-3
MDL: MFCD00084215
Formula: C₅H₁₀¹⁵NNO₃
Formula Weight: 147.14 g/mol



TEST	Specification
Appearance (Color)	White
Appearance (Form)	Powder
Purity (HPLC)	≥ 99.0 %
Chiral Purity	≤ 1.0 %
Proton NMR Spectrum	Conforms
Carbon NMR Spectrum	Conforms
¹⁵ N Enrichment	≥ 98.0
Water (by Karl Fischer)	≤ 0.5 %

Specification: PRD.0.ZQ5.10000068736

Sigma-Aldrich warrants, that at the time of the quality release or subsequent retest date this product conformed to the information contained in this publication. The current Specification sheet may be available at Sigma-Aldrich.com. For further inquiries, please contact Technical Service. Purchaser must determine the suitability of the product for its particular use. See reverse side of invoice or packing slip for additional terms and conditions of sale.