

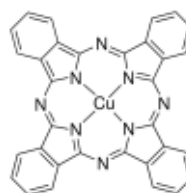
3050 Spruce Street, Saint Louis, MO 63103, USA

Website: www.sigmaaldrich.comEmail USA: techserv@sial.comOutside USA: eurtechserv@sial.com

Product Specification

Product Name:
Copper(II) phthalocyanine - β -form, Dye content 90 %

Product Number: 252980
CAS Number: 147-14-8
MDL: MFCD00010719
Formula: C₃₂H₁₆CuN₈
Formula Weight: 576.07 g/mol



TEST

Specification

Appearance (Color)	Dark Blue to Violet or Purple
Appearance (Form)	Powder
Infrared spectrum	Conforms to Structure
ICP Major Analysis	Confirmed
Confirms Copper Component	
Wavelength	675 - 681 nm
c = 0.005 g/l; Chloronaphthalene	
Extinction Coefficient	≥ 75000
Carbon	58.7 - 74.7 %
Nitrogen	17.1 - 21.7 %
Solubility (Turbidity)	Turbid
Solubility (Color)	Dark Blue
c = 10 mg/ml; Pyridine	

Specification: PRD.1.ZQ5.10000069948

Sigma-Aldrich warrants, that at the time of the quality release or subsequent retest date this product conformed to the information contained in this publication. The current Specification sheet may be available at Sigma-Aldrich.com. For further inquiries, please contact Technical Service. Purchaser must determine the suitability of the product for its particular use. See reverse side of invoice or packing slip for additional terms and conditions of sale.