

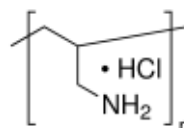
3050 Spruce Street, Saint Louis, MO 63103, USA

Website: [www.sigmaldrich.com](http://www.sigmaldrich.com)Email USA: [techserv@sial.com](mailto:techserv@sial.com)Outside USA: [eurtechserv@sial.com](mailto:eurtechserv@sial.com)

## Product Specification

Product Name:  
Poly(allylamine hydrochloride) - average Mw 50,000

Product Number: **283223**  
CAS Number: 71550-12-4  
MDL: MFCD00084396  
Formula: C<sub>3</sub>H<sub>8</sub>CIN



TEST	Specification
------	---------------

Appearance (Color)	White to Yellow
Appearance (Form)	Powder or Crystals or Crystalline Solid or Needles or Chunk(s)
<sup>1</sup> H NMR Spectrum	Conforms to Structure
Molecular Weight	40000 - 90000
Residual Monomer	≤ 10 %

Specification: PRD.4.ZQ5.10000078480

Sigma-Aldrich warrants, that at the time of the quality release or subsequent retest date this product conformed to the information contained in this publication. The current Specification sheet may be available at [Sigma-Aldrich.com](http://Sigma-Aldrich.com). For further inquiries, please contact Technical Service. Purchaser must determine the suitability of the product for its particular use. See reverse side of invoice or packing slip for additional terms and conditions of sale.