

3050 Spruce Street, Saint Louis, MO 63103, USA

Website: www.sigmaaldrich.comEmail USA: techserv@sial.comOutside USA: eurtechserv@sial.com

Product Specification

Product Name:

(–)-1,2-Bis[(2R,5R)-2,5-dimethylphospholano]benzene - kanata purity

Product Number:

665258

CAS Number:

147253-67-6

MDL:

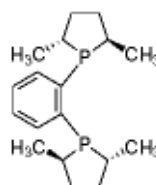
MFCD00142336

Formula:

C₁₈H₂₈P₂

Formula Weight:

306.36 g/mol



TEST

Specification

Appearance (Color)

White to Tan

Appearance (Form)

Conforms to Requirements

Powder, Crystals, Crystalline Powder and/or Chunks

Infrared spectrum

Conforms to Structure

Phosphorus NMR Spectra

Conforms to Structure

Optical Rotation

c = 1%; Chloroform

Specification Date : 06/22/2010

Sigma-Aldrich warrants, that at the time of the quality release or subsequent retest date this product conformed to the information contained in this publication. The current Specification sheet may be available at Sigma-Aldrich.com. For further inquiries, please contact Technical Service. Purchaser must determine the suitability of the product for its particular use. See reverse side of invoice or packing slip for additional terms and conditions of sale.