

3050 Spruce Street, Saint Louis, MO 63103, USA

Website: [www.sigmaldrich.com](http://www.sigmaldrich.com)

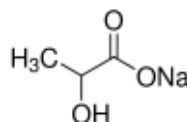
Email USA: [techserv@sial.com](mailto:techserv@sial.com)

Outside USA: [eurtechserv@sial.com](mailto:eurtechserv@sial.com)

## Product Specification

Product Name:  
Sodium DL-lactate solution - syrup, 60 % (w/w), synthetic

**Product Number:** L1375  
**CAS Number:** 72-17-3  
**MDL:** MFCD00065400  
**Formula:** C<sub>3</sub>H<sub>5</sub>NaO<sub>3</sub>  
**Formula Weight:** 112.06 g/mol  
**Storage Temperature:** 2 - 8 °C



TEST	Specification
Appearance (Color)	Colorless
Appearance (Form)	Viscous Liquid
Appearance (Turbidity)	Clear
Water (by Karl Fischer)	35 - 45 %
Density	1.2 - 1.4 g/ml
25 deg C	
Sodium (Na)	10.2 - 13.7 %
Purity (Enzymatic)	27 - 33 %
L-isomer	
Recommended Retest Period	-----
5 years	

Specification: PRD.1.ZQ5.10000036737

Sigma-Aldrich warrants, that at the time of the quality release or subsequent retest date this product conformed to the information contained in this publication. The current Specification sheet may be available at [Sigma-Aldrich.com](http://Sigma-Aldrich.com). For further inquiries, please contact Technical Service. Purchaser must determine the suitability of the product for its particular use. See reverse side of invoice or packing slip for additional terms and conditions of sale.