

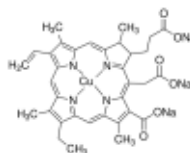
3050 Spruce Street, Saint Louis, MO 63103, USA

Website: www.sigmaaldrich.comEmail USA: techserv@sial.comOutside USA: eurtechserv@sial.com

Product Specification

Product Name:
Chlorophyllin sodium copper salt – commercial grade

Product Number: **C6003**
CAS Number: 11006-34-1
MDL: MFCD00012149
Formula: $C_{34}H_{31}CuN_4Na_3O_6$
Formula Weight: 724.15 g/mol
Storage Temperature: 2 - 8 °C



TEST

Specification

Appearance (Color)	Green to Very Dark Green and Black
Appearance (Form)	Powder
Solubility (Color)	Dark Green
100 mg/mL, H ₂ O	
Sodium (Na)	5.5 - 6.5 %
Copper (Cu)	3.5 - 5.0 %
Infrared spectrum	Conforms to Structure

Specification: PRD.2.ZQ5.10000013954

Sigma-Aldrich warrants, that at the time of the quality release or subsequent retest date this product conformed to the information contained in this publication. The current Specification sheet may be available at Sigma-Aldrich.com. For further inquiries, please contact Technical Service. Purchaser must determine the suitability of the product for its particular use. See reverse side of invoice or packing slip for additional terms and conditions of sale.