

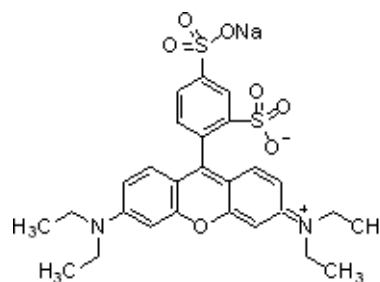
3050 Spruce Street, Saint Louis, MO 63103, USA

Website: www.sigmaaldrich.comEmail USA: techserv@sial.comOutside USA: eurtechserv@sial.com

Product Specification

Product Name:
Sulforhodamine B - Dye content 75 %

Product Number: **230162**
 CAS Number: 3520-42-1
 MDL: MFCD00010180
 Formula: C₂₇H₂₉N₂NaO₇S₂
 Formula Weight: 580.65 g/mol



TEST

Specification

Appearance (Color)	Green to Very Dark Green and Brown to Very Dark Brown
Appearance (Form)	Powder or Crystals
Infrared spectrum	Conforms to Structure
Wavelength	554 - 560 nm
c = 0.005g/L; 0.1N NaOH in MeOH	
Extinction Coefficient	≥ 85000
Purity (HPLC)	≥ 73.0 %
Carbon	≥ 40.8 %
Nitrogen	≥ 3.5 %
Solubility (Turbidity)	Clear
c = 1 mg/ml; Methanol	
Solubility (Color)	Orange to Very Dark Orange and Red to Very Dark Red and Orange-Red and Red-Orange

Specification: PRD.0.ZQ5.10000015206

Sigma-Aldrich warrants, that at the time of the quality release or subsequent retest date this product conformed to the information contained in this publication. The current Specification sheet may be available at Sigma-Aldrich.com. For further inquiries, please contact Technical Service. Purchaser must determine the suitability of the product for its particular use. See reverse side of invoice or packing slip for additional terms and conditions of sale.