

3050 Spruce Street, Saint Louis, MO 63103, USA

Website: www.sigmaaldrich.comEmail USA: techserv@sial.comOutside USA: eurtechserv@sial.com

Product Specification

Product Name:

Cholesterol - from sheep wool, ≥92.5% (GC), powder

Product Number:

C8503

CAS Number:

57-88-5

MDL:

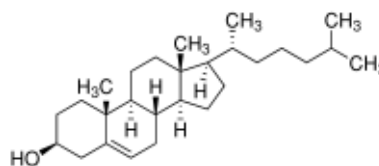
MFCD00003646

Formula:

C₂₇H₄₆O

Formula Weight:

386.65 g/mol



TEST

Specification

Appearance (Color)

White to Off White

Appearance (Form)

Powder

Solubility

Pass

Solubility in Alcohol

Current NF

Acidity

Pass

Current NF

Specific Rotation

-38 - -34 °

(c = 2, 1,4-Dioxane, 25 deg C)

Current NF

Residue on ignition (Ash)

≤ 0.1 %

Current NF

Loss on Drying

≤ 0.3 %

Current NF

Infrared spectrum

Conforms to Structure

Purity (GC)

≥ 92.5 %

Recommended Retest Period

3 years

Specification: PRD.0.ZQ5.10000038880

Sigma-Aldrich warrants, that at the time of the quality release or subsequent retest date this product conformed to the information contained in this publication. The current Specification sheet may be available at Sigma-Aldrich.com. For further inquiries, please contact Technical Service. Purchaser must determine the suitability of the product for its particular use. See reverse side of invoice or packing slip for additional terms and conditions of sale.