

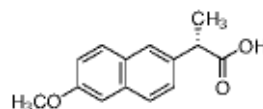
3050 Spruce Street, Saint Louis, MO 63103, USA

Website: www.sigmaldrich.comEmail USA: techserv@sial.comOutside USA: eurtechserv@sial.com

Product Specification

Product Name:
(S)-(+)-6-Methoxy- α -methyl-2-naphthaleneacetic acid - 98%

Product Number: 284785
CAS Number: 22204-53-1
MDL: MFCD00010500
Formula: C₁₄H₁₄O₃
Formula Weight: 230.26 g/mol



TEST

Specification

Appearance (Color)	White to Off-White
Appearance (Form)	Conforms to Requirements
Powder, Crystals or Crystalline Powder	
Infrared spectrum	Conforms to Structure
Purity (HPLC)	≥ 97.5 %
Optical Rotation	64.0 - 68.0 deg
c = 1%; CHCl ₃	
Recommended Retest Period	-----
4 Years	

Specification: PRD.1.ZQ5.10000017986

Sigma-Aldrich warrants, that at the time of the quality release or subsequent retest date this product conformed to the information contained in this publication. The current Specification sheet may be available at Sigma-Aldrich.com. For further inquiries, please contact Technical Service. Purchaser must determine the suitability of the product for its particular use. See reverse side of invoice or packing slip for additional terms and conditions of sale.