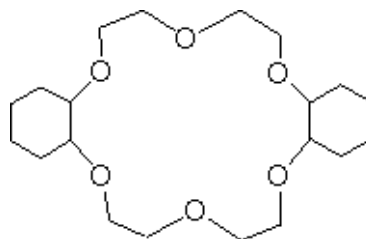


3050 Spruce Street, Saint Louis, MO 63103, USA

Website: www.sigmaldrich.comEmail USA: techserv@sial.comOutside USA: eurtechserv@sial.com**Product Specification**

Product Number: 158402
CAS Number: 16069-36-6
MDL: MFCD00005099
Formula: C₂₀H₃₆O₆
Formula Weight: 372.50 g/mol

**TEST****Specification**

| | |
|---|-----------------------------|
| Appearance (Color) White (Solid Phase) Colorless to Light Yellow (Liquid Phase) | Conforms to Requirements |
| Appearance (Form) Powder, Crystalline Powder, Solid, or Liquid | Conforms to Requirements |
| Infrared spectrum | Conforms to Structure |
| Purity (GC) | ≥97.5 % |
| Solubility (Turbidity) Solubility Concentration: 10% in Chloroform | Clear to Very Slightly Hazy |
| Solubility (Color) Solubility Concentration: 10% in Chloroform | Colorless to Light Yellow |

Remarks:

Specification Date : 08/30/2010

Sigma-Aldrich warrants, that at the time of the quality release or subsequent retest date this product conformed to the information contained in this publication. The current Specification sheet may be available at Sigma-Aldrich.com. For further inquiries, please contact Technical Service. Purchaser must determine the suitability of the product for its particular use. See reverse side of invoice or packing slip for additional terms and conditions of sale.