

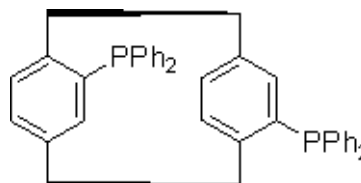
3050 Spruce Street, Saint Louis, MO 63103, USA

Website: www.sigmaldrich.comEmail USA: techserv@sial.comOutside USA: eurtechserv@sial.com

Product Specification

Product Name:
(R)-(-)-4,12-Bis(diphenylphosphino)-[2.2]-paracyclophane - 96%

Product Number: 682144
CAS Number: 364732-88-7
MDL: MFCD03094575
Formula: C₄₀H₃₄P₂
Formula Weight: 576.656 AMU



TEST

Specification

Appearance (Color)
Appearance (Form)
Proton NMR spectrum
Phosphorus NMR Spectra
Optical Rotation
c = 1%; Chloroform

White to Tan
Powder or Crystals
Conforms to Structure
Conforms to Structure
-38.0 - -30.0 deg

Specification: PRD.1.ZQ5.10000010423

Sigma-Aldrich warrants, that at the time of the quality release or subsequent retest date this product conformed to the information contained in this publication. The current Specification sheet may be available at Sigma-Aldrich.com. For further inquiries, please contact Technical Service. Purchaser must determine the suitability of the product for its particular use. See reverse side of invoice or packing slip for additional terms and conditions of sale.