

3050 Spruce Street, Saint Louis, MO 63103, USA

Website: [www.sigmaaldrich.com](http://www.sigmaaldrich.com)Email USA: [techserv@sial.com](mailto:techserv@sial.com)Outside USA: [eurtechserv@sial.com](mailto:eurtechserv@sial.com)

## Product Specification

Product Name:

(1R,2S)-(-)-EPHEDRINE, 98%

**Product Number:****134910**

CAS Number:

299-42-3

MDL:

MFCD00064257

Formula:

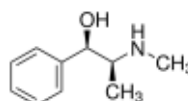
C<sub>10</sub>H<sub>15</sub>NO

Formula Weight:

165.23 g/mol

Storage Temperature:

2 - 8 °C

**TEST****Specification**

Appearance (Color)

White to Yellow

Appearance (Form)

Powder or Crystals or Solid or Chunks

Infrared spectrum

Conforms to Structure

Purity (Titration by HCL04)

97.5 - 102.5 %

Optical Rotation

-42.5 - -39.5 deg

C = 5%, 1N HCl

Purity (GC)

≥ 97.5 %

Specification: PRD.0.ZQ5.10000068988

Sigma-Aldrich warrants, that at the time of the quality release or subsequent retest date this product conformed to the information contained in this publication. The current Specification sheet may be available at [Sigma-Aldrich.com](http://Sigma-Aldrich.com). For further inquiries, please contact Technical Service. Purchaser must determine the suitability of the product for its particular use. See reverse side of invoice or packing slip for additional terms and conditions of sale.