

3050 Spruce Street, Saint Louis, MO 63103, USA

Website: www.sigmaldrich.com

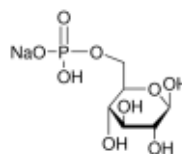
Email USA: techserv@sial.com

Outside USA: eurtechserv@sial.com

Product Specification

Product Name:
D-Glucose 6-phosphate sodium salt - crystalline

Product Number: G7879
CAS Number: 54010-71-8
MDL: MFCD00006611
Formula: C₆H₁₂NaO₉P
Formula Weight: 282.12 g/mol



TEST

Specification

Appearance (Color)	White to Off White
Appearance (Form)	Powder
Solubility (Color)	Colorless to Very Faint Yellow
Solubility (Turbidity)	Clear
50 mg/mL, H ₂ O	
Proton NMR Spectrum	Conforms to Structure
Water (by Karl Fischer)	≤ 6 %
Sodium (Na) anhydrous	6.1 - 10.2 %
Inorganic Phosphorus	≤ 0.5 %
Purity (HPLC)	≥ 98 %
HPAE	
Purity (HPLC)	≥ 98 %
Recommended Retest Period	-----
3 years	

Specification: PRD.3.ZQ5.1000009136

Sigma-Aldrich warrants, that at the time of the quality release or subsequent retest date this product conformed to the information contained in this publication. The current Specification sheet may be available at Sigma-Aldrich.com. For further inquiries, please contact Technical Service. Purchaser must determine the suitability of the product for its particular use. See reverse side of invoice or packing slip for additional terms and conditions of sale.