

3050 Spruce Street, Saint Louis, MO 63103, USA

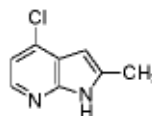
Website: [www.sigmaldrich.com](http://www.sigmaldrich.com)Email USA: [techserv@sial.com](mailto:techserv@sial.com)Outside USA: [eurtechserv@sial.com](mailto:eurtechserv@sial.com)

## Product Specification

Product Name:  
4-Chloro-2-methyl-7-azaindole - 96%

Product Number: **732230**  
CAS Number: 307951-53-7

Formula: C<sub>8</sub>H<sub>7</sub>ClN<sub>2</sub>  
Formula Weight: 166.61 g/mol



TEST	Specification
------	---------------

Appearance (Color)	White to Faint Yellow to Yellow or Faint Brown to Brown
Appearance (Form)	Powder or Crystals
Infrared spectrum	Conforms to Structure
Carbon	55.1 - 60.3 %
Nitrogen	16.1 - 17.6 %
Purity (GC)	≥ 95.5 %

Specification Date : 05/05/2011

Sigma-Aldrich warrants, that at the time of the quality release or subsequent retest date this product conformed to the information contained in this publication. The current Specification sheet may be available at [Sigma-Aldrich.com](http://Sigma-Aldrich.com). For further inquiries, please contact Technical Service. Purchaser must determine the suitability of the product for its particular use. See reverse side of invoice or packing slip for additional terms and conditions of sale.