

3050 Spruce Street, Saint Louis, MO 63103, USA

Website: [www.sigmaldrich.com](http://www.sigmaldrich.com)Email USA: [techserv@sial.com](mailto:techserv@sial.com)Outside USA: [eurtechserv@sial.com](mailto:eurtechserv@sial.com)

## Product Specification

Product Name:

Glycidyl 2-methylphenyl ether - technical grade, 90%

Product Number:

340146

CAS Number:

2210-79-9

MDL:

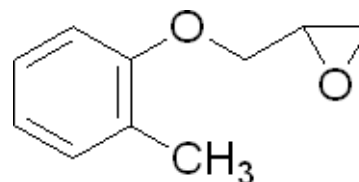
MFCD00037847

Formula:

C<sub>10</sub>H<sub>12</sub>O<sub>2</sub>

Formula Weight:

164.2 g/mol



### TEST

### Specification

Appearance (Color)

Colorless

Appearance (Form)

Liquid

Infrared spectrum

Conforms to Structure

Purity (GC)

≥ 89.5 %

Specification: PRD.1.ZQ5.10000015852

Sigma-Aldrich warrants, that at the time of the quality release or subsequent retest date this product conformed to the information contained in this publication. The current Specification sheet may be available at [Sigma-Aldrich.com](http://Sigma-Aldrich.com). For further inquiries, please contact Technical Service. Purchaser must determine the suitability of the product for its particular use. See reverse side of invoice or packing slip for additional terms and conditions of sale.