

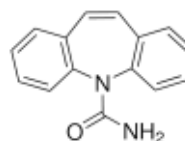
3050 Spruce Street, Saint Louis, MO 63103, USA

Website: www.sigmaaldrich.comEmail USA: techserv@sial.comOutside USA: eurtechserv@sial.com

Product Specification

Product Name:
Carbamazepine – meets USP testing specifications

Product Number: C8981
CAS Number: 298-46-4
MDL: MFCD00005073
Formula: C₁₅H₁₂N₂O
Formula Weight: 236.27 g/mol
Storage Temperature: 2 - 8 °C



TEST	Specification
Identity	Pass
X-Ray Diffraction	Pass
Acidity	Pass
Alkalinity	Pass
Loss on Drying	≤ 0.5 %
Residue on ignition (Ash)	≤ 0.1 %
Chloride Content	≤ 0.014 %
Heavy Metals	Pass
< or = 0.001%	
Related Compound	≤ 0.5 %
Total Impurities	
Related Compound	≤ 0.2 %
Of Any Individual Impurity	
Assay	98.0 - 102.0 %
Dry Basis	
Residual Solvents USP 7	Meets Requirements
Residual Solvents USP 7	Conforms
Class 1, Class 2 Meets Option 1, Class 3 < /= 0.5%	
Residual Solvents USP 7	Conforms
Class 1, Class 2 Meets Option 1, Class 3 < /= 0.5%, and Other Solvents	
Residual Solvents USP 7	Conforms
Class 2 Does Not Meet Option 1, Class 3 is > 0.5%	
Residual Solvents USP 7	Conforms
Class 2 Meets Option 1, Class 3 < /= 0.5%, and Other Solvents	
Expected Solvent	Residual Solvent

Sigma-Aldrich warrants, that at the time of the quality release or subsequent retest date this product conformed to the information contained in this publication. The current Specification sheet may be available at Sigma-Aldrich.com. For further inquiries, please contact Technical Service. Purchaser must determine the suitability of the product for its particular use. See reverse side of invoice or packing slip for additional terms and conditions of sale.

3050 Spruce Street, Saint Louis, MO 63103, USA

Website: www.sigmaaldrich.com

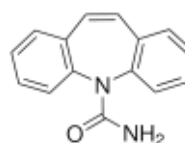
Email USA: techserv@sial.com

Outside USA: eurtechserv@sial.com

Product Specification

Product Name:
Carbamazepine - meets USP testing specifications

Product Number: C8981
CAS Number: 298-46-4
MDL: MFCD00005073
Formula: C₁₅H₁₂N₂O
Formula Weight: 236.27 g/mol
Storage Temperature: 2 - 8 °C



TEST	Specification
------	---------------

Expected Solvent	Residual Solvent
Expected Solvent	Residual Solvent
Expected Solvent	Residual Solvent
Expected Solvent	Residual Solvent
Expected Solvent	Residual Solvent
Expected Solvent	Residual Solvent
Expected Solvent	Residual Solvent
Expected Solvent	Residual Solvent
Expected Solvent	Residual Solvent
Expected Solvent	Residual Solvent
Expected Solvent - Benzene	≤ 2 ppm
Expected Solvent - Carbon tetrachloride	≤ 4 ppm
Expected Solvent - 1,2-Dichloroethane	≤ 5 ppm
Expected Solvent - 1,1-Dichloroethene	≤ 8 ppm
Expected Solvent -1,1,1-Trichloroethane	≤ 1500 ppm

Specification: PRD.0.ZQ5.10000099056

Sigma-Aldrich warrants, that at the time of the quality release or subsequent retest date this product conformed to the information contained in this publication. The current Specification sheet may be available at Sigma-Aldrich.com. For further inquiries, please contact Technical Service. Purchaser must determine the suitability of the product for its particular use. See reverse side of invoice or packing slip for additional terms and conditions of sale.