

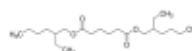
3050 Spruce Street, Saint Louis, MO 63103, USA

Website: [www.sigmaaldrich.com](http://www.sigmaaldrich.com)Email USA: [techserv@sial.com](mailto:techserv@sial.com)Outside USA: [eurtechserv@sial.com](mailto:eurtechserv@sial.com)

## Product Specification

Product Name:  
Bis(2-ethylhexyl) adipate - ≥99%

Product Number: **W519006**  
CAS Number: 103-23-1  
MDL: MFCD00009496  
Formula: C<sub>22</sub>H<sub>42</sub>O<sub>4</sub>  
Formula Weight: 370.57 g/mol



TEST	Specification
Appearance (Color)	Colorless
Appearance (Form)	Liquid
Infrared spectrum	Conforms to Structure
Refractive index at 20 °C	1.443 - 1.447
Water (by Karl Fischer)	≤ 0.10 %
Specific Gravity at 20 Degrees Celsius	0.925 - 0.929
Purity (GC)	≥ 99.00 %
Arsenic (As)	≤ 3.0 ppm
Cadmium (Cd)	≤ 1.0 ppm
Mercury (Hg)	≤ 1.0 ppm
Lead (Pb)	≤ 10.0 ppm

Specification: PRD.3.ZQ5.10000038981

Sigma-Aldrich warrants, that at the time of the quality release or subsequent retest date this product conformed to the information contained in this publication. The current Specification sheet may be available at [Sigma-Aldrich.com](http://Sigma-Aldrich.com). For further inquiries, please contact Technical Service. Purchaser must determine the suitability of the product for its particular use. See reverse side of invoice or packing slip for additional terms and conditions of sale.