

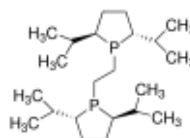
3050 Spruce Street, Saint Louis, MO 63103, USA

Website: [www.sigmaaldrich.com](http://www.sigmaaldrich.com)Email USA: [techserv@sial.com](mailto:techserv@sial.com)Outside USA: [eurtechserv@sial.com](mailto:eurtechserv@sial.com)

## Product Specification

Product Name:  
1,2-Bis[(2S,5S)-2,5-diisopropylphospholano]ethane – kanata purity

Product Number: **668435**  
CAS Number: 528854-34-4  
Formula: C<sub>22</sub>H<sub>44</sub>P<sub>2</sub>  
Formula Weight: 370.53 g/mol



### TEST

### Specification

Appearance (Color)	White to Off-White
Appearance (Form)	Conforms to Requirements
Powder, Crystals and/or Chunks	
Proton NMR spectrum	Conforms to Structure
Phosphorus NMR Spectra	Conforms to Structure
Optical Rotation	230.0 - 244.0 deg
c = 1%; Chloroform	
Purity (GC)	≥ 96.5 %

Specification: PRD.1.ZQ5.10000004057

Sigma-Aldrich warrants, that at the time of the quality release or subsequent retest date this product conformed to the information contained in this publication. The current Specification sheet may be available at [Sigma-Aldrich.com](http://Sigma-Aldrich.com). For further inquiries, please contact Technical Service. Purchaser must determine the suitability of the product for its particular use. See reverse side of invoice or packing slip for additional terms and conditions of sale.