

3050 Spruce Street, Saint Louis, MO 63103, USA

Website: [www.sigmaldrich.com](http://www.sigmaldrich.com)

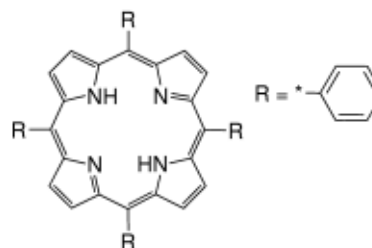
Email USA: [techserv@sial.com](mailto:techserv@sial.com)

Outside USA: [eurtechserv@sial.com](mailto:eurtechserv@sial.com)

## Product Specification

Product Name:  
5,10,15,20-Tetraphenyl-21H,23H-porphine - 97%

**Product Number:** 160997  
**CAS Number:** 917-23-7  
**MDL:** MFCD00011680  
**Formula:** C<sub>44</sub>H<sub>30</sub>N<sub>4</sub>  
**Formula Weight:** 614.74 g/mol



TEST	Specification
Appearance (Color)	Blue to Dark Violet
Appearance (Form)	Conforms to Requirements
Powder, Crystals or Crystalline Powder	
Infrared spectrum	Conforms to Structure
Wavelength	647 - 653 nm
In Toulene	
Extinction Coefficient	≥ 4000
Wavelength	589 - 595 nm
Extinction Coefficient	≥ 5000
Wavelength	546 - 552 nm
Extinction Coefficient	≥ 8000
Wavelength	512 - 518 nm
Extinction Coefficient	≥ 18000
Wavelength	480 - 486 nm
Extinction Coefficient	≥ 3500
Chlorin	≤ 3.0 %
Carbon	82.6 - 89.0 %
Nitrogen	8.8 - 9.5 %
Purity (HPLC)	≥ 96.5 %
Solubility (Color)	Conforms
c = 1mg/ml; Chloroform	
Dark Red to Purple	
Solubility (Turbidity)	Conforms
Clear to Opaque	

Sigma-Aldrich warrants, that at the time of the quality release or subsequent retest date this product conformed to the information contained in this publication. The current Specification sheet may be available at [Sigma-Aldrich.com](http://Sigma-Aldrich.com). For further inquiries, please contact Technical Service. Purchaser must determine the suitability of the product for its particular use. See reverse side of invoice or packing slip for additional terms and conditions of sale.

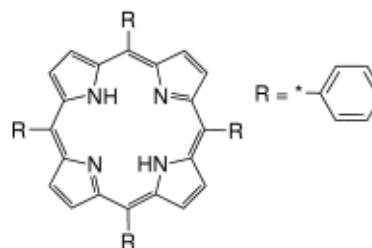
3050 Spruce Street, Saint Louis, MO 63103, USA

Website: [www.sigmaaldrich.com](http://www.sigmaaldrich.com)Email USA: [techserv@sial.com](mailto:techserv@sial.com)Outside USA: [eurtechserv@sial.com](mailto:eurtechserv@sial.com)

## Product Specification

Product Name:  
5,10,15,20-Tetraphenyl-21H,23H-porphine - 97%

**Product Number:** 160997  
**CAS Number:** 917-23-7  
**MDL:** MFCD00011680  
**Formula:** C<sub>44</sub>H<sub>30</sub>N<sub>4</sub>  
**Formula Weight:** 614.74 g/mol



### TEST

### Specification

**Remarks:**

Reviewing Chemist :

Specification: PRD.0.ZQ5.10000037157

Sigma-Aldrich warrants, that at the time of the quality release or subsequent retest date this product conformed to the information contained in this publication. The current Specification sheet may be available at [Sigma-Aldrich.com](http://Sigma-Aldrich.com). For further inquiries, please contact Technical Service. Purchaser must determine the suitability of the product for its particular use. See reverse side of invoice or packing slip for additional terms and conditions of sale.