

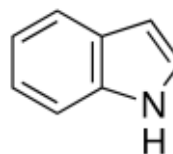
3050 Spruce Street, Saint Louis, MO 63103, USA

Website: [www.sigmaldrich.com](http://www.sigmaldrich.com)Email USA: [techserv@sial.com](mailto:techserv@sial.com)Outside USA: [eurtechserv@sial.com](mailto:eurtechserv@sial.com)

## Product Specification

Product Name:  
Indole - ≥99%, FG

**Product Number:** W259306  
**CAS Number:** 120-72-9  
**MDL:** MFCD00005607  
**Formula:** C<sub>8</sub>H<sub>7</sub>N  
**Formula Weight:** 117.15 g/mol



TEST	Specification
------	---------------

Appearance (Color)	White to Beige
Appearance (Form)	Powder or Crystals or Flakes
Infrared spectrum	Conforms to Structure
Purity (GC)	≥ 99.0 %
GC Identified Peak	≤ 250 ppm
Hexane	
Arsenic (As)	≤ 3 ppm
Cadmium (Cd)	≤ 1 ppm
Mercury (Hg)	≤ 1 ppm
Lead (Pb)	≤ 10 ppm
Organoleptics	Pass
Expiration Date Period	Confirmed
5 Years	

Specification: PRD.7.ZQ5.10000021891

Sigma-Aldrich warrants, that at the time of the quality release or subsequent retest date this product conformed to the information contained in this publication. The current Specification sheet may be available at [Sigma-Aldrich.com](http://Sigma-Aldrich.com). For further inquiries, please contact Technical Service. Purchaser must determine the suitability of the product for its particular use. See reverse side of invoice or packing slip for additional terms and conditions of sale.