

3050 Spruce Street, Saint Louis, MO 63103, USA

Website: www.sigmaaldrich.comEmail USA: techserv@sial.comOutside USA: eurtechserv@sial.com

Product Specification

Product Name:

 α -D-Glucose 1-phosphate disodium salt hydrate - $\geq 97\%$

Product Number:

G7000

CAS Number:

56401-20-8

MDL:

MFCD00150837

Formula:

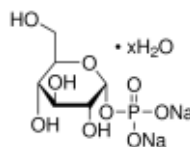
 $C_6H_{11}Na_2O_9P \cdot xH_2O$

Formula Weight:

304.10 g/mol

Storage Temperature:

-20 °C



TEST

Specification

Appearance (Color)

White

Appearance (Form)

Powder

Solubility (Turbidity)

Clear

Solubility (Color)

Colorless

50 mg/mL, H₂O

Water (by Karl Fischer)

 $\leq 20.7 \%$

Starch by Colometric Assay

 $\leq 0.01 \%$

Glucose by Enzymatic

 $\leq 0.1 \text{ mole}\%$

Enzymatic Purity (anhydrous)

 $\geq 97 \%$

Sodium (Na) anhydrous

13.5 - 16.7 %

Alpha-D-Glucose 1,6-Diphosphat

 $\leq 0.5 \text{ mole}\%$

Recommended Retest Period

3 years

Specification: PRD.2.ZQ5.10000007024

Sigma-Aldrich warrants, that at the time of the quality release or subsequent retest date this product conformed to the information contained in this publication. The current Specification sheet may be available at Sigma-Aldrich.com. For further inquiries, please contact Technical Service. Purchaser must determine the suitability of the product for its particular use. See reverse side of invoice or packing slip for additional terms and conditions of sale.