

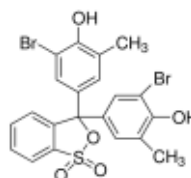
3050 Spruce Street, Saint Louis, MO 63103, USA

Website: [www.sigmaldrich.com](http://www.sigmaldrich.com)Email USA: [techserv@sial.com](mailto:techserv@sial.com)Outside USA: [eurtechserv@sial.com](mailto:eurtechserv@sial.com)

## Product Specification

Product Name:  
Bromocresol Purple – BioReagent, suitable for indicator, Dye content 90 %

Product Number: 114375  
CAS Number: 115-40-2  
MDL: MFCD00011681  
Formula: C<sub>21</sub>H<sub>16</sub>Br<sub>2</sub>O<sub>5</sub>S  
Formula Weight: 540.22 g/mol



TEST	Specification
Appearance (Color)	Conforms to Requirements
Grey to Light Purple or Pink to Yellow-Tan	
Appearance (Form)	Powder
Infrared spectrum	Conforms to Structure
Wavelength	418 - 424 nm
c = 0.02g/L; Methanol	
Extinction Coefficient	≥ 22000
Visual Interval 1	Conforms
pH 5.2; Yellow	
Visual Interval 2	Conforms
pH 6.8; Purple	
Carbon	≥ 41.5 %
Solubility (Turbidity)	Clear
c = 0.1%; Ethanol	
Solubility (Color)	Orange
Purity (HPLC)	≥ 89.0 %

Specification: PRD.0.ZQ5.10000050036

Sigma-Aldrich warrants, that at the time of the quality release or subsequent retest date this product conformed to the information contained in this publication. The current Specification sheet may be available at [Sigma-Aldrich.com](http://Sigma-Aldrich.com). For further inquiries, please contact Technical Service. Purchaser must determine the suitability of the product for its particular use. See reverse side of invoice or packing slip for additional terms and conditions of sale.