

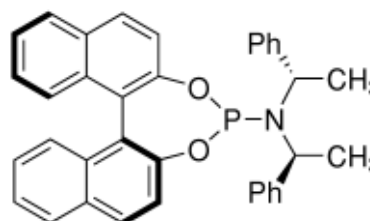
3050 Spruce Street, Saint Louis, MO 63103, USA

Website: www.sigmaaldrich.comEmail USA: techserv@sial.comOutside USA: eurtechserv@sial.com

Product Specification

Product Name:
(S,S,S)-(+)-(3,5-Dioxa-4-phosphacyclohepta[2,1-a:3,4-a']dinaphthalen-4-yl)bis(1-phenylethyl)amine - 97%

Product Number: 665290
CAS Number: 380230-02-4
MDL: MFCD04117688
Formula: C₃₆H₃₀NO₂P
Formula Weight: 539.6 g/mol



TEST

Specification

Appearance (Color)
Appearance (Form)
Powder, Crystals, Crystalline Powder and/or Chunks
Infrared spectrum
Optical Rotation
C = 0.4%, CHCl₃
Proton NMR Spectrum
Phosphorus NMR Spectra

White to Off-White
Conforms to Requirements

Conforms to Structure
6.0 - 14.0 deg

Conforms to Structure
Conforms to Structure

Specification: PRD.0.ZQ5.10000027002

Sigma-Aldrich warrants, that at the time of the quality release or subsequent retest date this product conformed to the information contained in this publication. The current Specification sheet may be available at Sigma-Aldrich.com. For further inquiries, please contact Technical Service. Purchaser must determine the suitability of the product for its particular use. See reverse side of invoice or packing slip for additional terms and conditions of sale.