

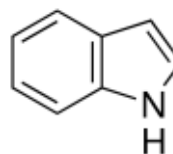
3050 Spruce Street, Saint Louis, MO 63103, USA

Website: www.sigmaaldrich.comEmail USA: techserv@sial.comOutside USA: eurtechserv@sial.com

Product Specification

Product Name:
Indole - natural, $\geq 97\%$, FG

Product Number: **W259378**
CAS Number: 120-72-9
Formula: C₈H₇N
Formula Weight: 117.15 g/mol



TEST	Specification
------	---------------

Appearance (Color)	White to Beige
Appearance (Form)	Powder or Crystals or Flakes
Infrared Spectrum	Conforms to Structure
Purity (GC)	$\geq 97.0\%$
Arsenic (As)	≤ 3 ppm
Cadmium (Cd)	≤ 1 ppm
Mercury (Hg)	≤ 1 ppm
Lead (Pb)	≤ 10 ppm
Organoleptics	Pass
Expiration Date Period	-----
5 Years	

Specification: PRD.1.ZQ5.1000098535

Sigma-Aldrich warrants, that at the time of the quality release or subsequent retest date this product conformed to the information contained in this publication. The current Specification sheet may be available at Sigma-Aldrich.com. For further inquiries, please contact Technical Service. Purchaser must determine the suitability of the product for its particular use. See reverse side of invoice or packing slip for additional terms and conditions of sale.

