

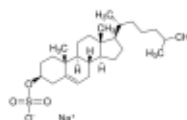
3050 Spruce Street, Saint Louis, MO 63103, USA

Website: www.sigmaldrich.comEmail USA: techserv@sial.comOutside USA: eurtechserv@sial.com

Product Specification

Product Name:
Sodium cholesteryl sulfate

Product Number: C9523
CAS Number: 2864-50-8
MDL: MFCD00079091
Formula: C₂₇H₄₅NaO₄S
Formula Weight: 488.70 g/mol
Storage Temperature: -20 °C



TEST	Specification
Appearance (Color)	White
Appearance (Form)	Powder
Solubility (Color)	Colorless
Solubility (Turbidity)	Clear
10 mg/ml, CHCl ₃ :MeOH (1:1)	
Infrared spectrum	Conforms to Structure
Purity (TLC)	≥ 98 %
Water (by Karl Fischer)	≤ 7 %
Carbon (anhydrous)	65.0 - 67.7 %
Sodium (Na) anhydrous	4.4 - 5.0 %

Specification: PRD.1.ZQ5.10000043320

Sigma-Aldrich warrants, that at the time of the quality release or subsequent retest date this product conformed to the information contained in this publication. The current Specification sheet may be available at Sigma-Aldrich.com. For further inquiries, please contact Technical Service. Purchaser must determine the suitability of the product for its particular use. See reverse side of invoice or packing slip for additional terms and conditions of sale.