

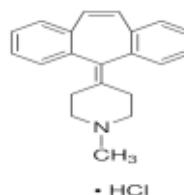
3050 Spruce Street, Saint Louis, MO 63103, USA

Website: [www.sigmaaldrich.com](http://www.sigmaaldrich.com)Email USA: [techserv@sial.com](mailto:techserv@sial.com)Outside USA: [eurtechserv@sial.com](mailto:eurtechserv@sial.com)

## Product Specification

Product Name:  
Cyproheptadine hydrochloride sesquihydrate - ≥98% (TLC), solid

Product Number: **C6022**  
CAS Number: 41354-29-4  
MDL: MFCD00012538  
Formula: C<sub>21</sub>H<sub>21</sub>N·HCl·1.5H<sub>2</sub>O  
Formula Weight: 350.88 g/mol



TEST	Specification
Appearance (Color)	White to Light Yellow
Appearance (Form)	Powder
Solubility (Color)	Colorless to Faint Yellow
Solubility (Turbidity)	Clear
50 mg/ml in EtOH	
Infrared spectrum	Conforms to Structure
Purity (TLC)	≥ 98 %
Carbon	70.0 - 73.6 %
Nitrogen	3.8 - 4.1 %
Water (by Karl Fischer)	7.0 - 9.0 %

Specification: PRD.0.ZQ5.10000070107

Sigma-Aldrich warrants, that at the time of the quality release or subsequent retest date this product conformed to the information contained in this publication. The current Specification sheet may be available at [Sigma-Aldrich.com](http://Sigma-Aldrich.com). For further inquiries, please contact Technical Service. Purchaser must determine the suitability of the product for its particular use. See reverse side of invoice or packing slip for additional terms and conditions of sale.