

3050 Spruce Street, Saint Louis, MO 63103, USA

Website: [www.sigmaaldrich.com](http://www.sigmaaldrich.com)

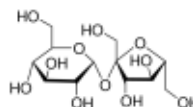
Email USA: [techserv@sial.com](mailto:techserv@sial.com)

Outside USA: [eurtechserv@sial.com](mailto:eurtechserv@sial.com)

## Product Specification

Product Name:  
Sucrose - BioXtra, ≥99.5% (GC)

Product Number: **S7903**  
CAS Number: 57-50-1  
MDL: MFCD00006626  
Formula: C<sub>12</sub>H<sub>22</sub>O<sub>11</sub>  
Formula Weight: 342.30 g/mol



TEST	Specification
Solubility (Color)	Colorless
Solubility (Turbidity)	Clear
1 M, H <sub>2</sub> O	
Loss on Drying	≤ 0.2 %
(HV, at 18-26 deg C)	
Residue on ignition (Ash)	≤ 0.01 %
(as SO <sub>4</sub> )	
Chloride Content	≤ 0.005 %
Sulfate (SO <sub>4</sub> )	≤ 0.005 %
Insoluble Matter	Pass
No Residue	
Aluminum (AL)	≤ 0.0005 %
Lead (Pb)	≤ 0.0005 %
Bismuth ( Bi)	≤ 0.0005 %
Calcium (Ca)	≤ 0.001 %
Chromium (Cr)	≤ 0.0005 %
Magnesium (Mg)	≤ 0.0005 %
Manganese (Mn)	≤ 0.0005 %
Iron (Fe)	≤ 0.0005 %
Lithium	≤ 0.0005 %
Molybdenum (Mo)	≤ 0.0005 %
Nickel	≤ 0.0005 %
Sodium (Na)	≤ 0.005 %
Potassium (K)	≤ 0.005 %

Sigma-Aldrich warrants, that at the time of the quality release or subsequent retest date this product conformed to the information contained in this publication. The current Specification sheet may be available at [Sigma-Aldrich.com](http://Sigma-Aldrich.com). For further inquiries, please contact Technical Service. Purchaser must determine the suitability of the product for its particular use. See reverse side of invoice or packing slip for additional terms and conditions of sale.

3050 Spruce Street, Saint Louis, MO 63103, USA

Website: [www.sigmaaldrich.com](http://www.sigmaaldrich.com)

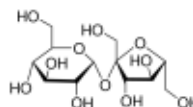
Email USA: [techserv@sial.com](mailto:techserv@sial.com)

Outside USA: [eurtechserv@sial.com](mailto:eurtechserv@sial.com)

## Product Specification

Product Name:  
Sucrose - BioXtra, ≥99.5% (GC)

**Product Number:** S7903  
**CAS Number:** 57-50-1  
**MDL:** MFCD00006626  
**Formula:** C<sub>12</sub>H<sub>22</sub>O<sub>11</sub>  
**Formula Weight:** 342.30 g/mol



TEST	Specification
pH	5.5 - 7.5
1 M, H <sub>2</sub> O at 20 deg C	
A260 UV Absorption (1 M in H <sub>2</sub> O)	≤ 0.09
A280 UV Absorption (1 M in H <sub>2</sub> O)	≤ 0.07
Specific Rotation (Sodium Lamp; c = 10 in H <sub>2</sub> O at 20 deg C)	65.5 - 67.5 °
Barium	≤ 0.0005 %
Zinc (Zn)	≤ 0.0005 %
Cadmium (Cd)	≤ 0.0005 %
Cobalt (Co)	≤ 0.0005 %
Copper (Cu)	≤ 0.0005 %
Strontium (Sr)	≤ 0.0005 %
Arsenic (As) < or = 0.0001%	Pass
Appearance (Color)	White
Appearance (Form)	Crystals
Infrared spectrum	Conforms to Structure
Purity (GC)	≥ 99.5 %
Recommended Retest Period 5 years	-----

Specification: PRD.4.ZQ5.10000007130

Sigma-Aldrich warrants, that at the time of the quality release or subsequent retest date this product conformed to the information contained in this publication. The current Specification sheet may be available at [Sigma-Aldrich.com](http://Sigma-Aldrich.com). For further inquiries, please contact Technical Service. Purchaser must determine the suitability of the product for its particular use. See reverse side of invoice or packing slip for additional terms and conditions of sale.