

3050 Spruce Street, Saint Louis, MO 63103, USA

Website: www.sigmaaldrich.comEmail USA: techserv@sial.comOutside USA: eurtechserv@sial.com

Product Specification

Product Name:

 α -D-Glucose 1-phosphate disodium salt hydrate - $\geq 95\%$

Product Number:

G1259

CAS Number:

56401-20-8

MDL:

MFCD00150837

Formula:

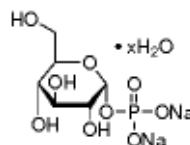
 $C_6H_{11}Na_2O_9P \cdot xH_2O$

Formula Weight:

304.10 g/mol

Storage Temperature:

-20 °C



TEST	Specification
Appearance (Color)	White
Appearance (Form)	Powder
Solubility (Turbidity)	Clear
Solubility (Color)	Colorless
50 mg/mL, H ₂ O	
Water (by Karl Fischer)	$\leq 20.7 \%$
Starch by Colorimetric Assay	$\leq 0.1 \%$
Glucose by Enzymatic	$\leq 0.1 \text{ mole}\%$
Sodium (Na) anhydrous	12.5 - 18.0 %
Enzymatic Purity (anhydrous)	$\geq 95 \%$
Alpha-D-Glucose 1,6Diphosphate	0.25 - 1.00 mole%

Specification: PRD.0.ZQ5.10000018842

Sigma-Aldrich warrants, that at the time of the quality release or subsequent retest date this product conformed to the information contained in this publication. The current Specification sheet may be available at Sigma-Aldrich.com. For further inquiries, please contact Technical Service. Purchaser must determine the suitability of the product for its particular use. See reverse side of invoice or packing slip for additional terms and conditions of sale.