

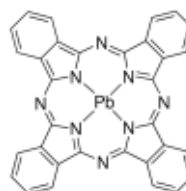
3050 Spruce Street, Saint Louis, MO 63103, USA

Website: www.sigmaaldrich.comEmail USA: techserv@sial.comOutside USA: eurtechserv@sial.com

Product Specification

Product Name:
Lead(II) phthalocyanine - Dye content 80 %

Product Number: 379565
CAS Number: 15187-16-3
MDL: MFCD00053951
Formula: C₃₂H₁₆N₈Pb
Formula Weight: 719.72 g/mol



TEST	Specification
Appearance (Color)	Blue to Dark Blue and Black
Appearance (Form)	Powder or Solid or Crystals
Infrared Spectrum	Conforms to Structure
Carbon	43.7 - 65.0 %
Nitrogen	12.5 - 18.5 %
Wavelength	662 - 666 nm
C= 0.01g/L in Chloronaphthalene	
Extinction Coefficient	≥ 70000
Wavelength	697 - 701 nm
C= 0.01g/L in Chloronaphthalene	
Extinction Coefficient	≥ 80000

Remarks:

Reviewing Chemist :

Specification: PRD.0.ZQ5.10000096908

Sigma-Aldrich warrants, that at the time of the quality release or subsequent retest date this product conformed to the information contained in this publication. The current Specification sheet may be available at Sigma-Aldrich.com. For further inquiries, please contact Technical Service. Purchaser must determine the suitability of the product for its particular use. See reverse side of invoice or packing slip for additional terms and conditions of sale.