

3050 Spruce Street, Saint Louis, MO 63103, USA

Website: www.sigmaldrich.comEmail USA: techserv@sial.comOutside USA: eurtechserv@sial.com

Product Specification

Product Name:

Polyethylene - average M_w ~4,000 by GPC, average M_n ~1,700 by GPC**Product Number:****427772**

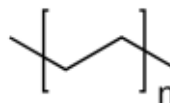
CAS Number:

9002-88-4

MDL:

MFCD00084423

Formula:

C₂H₄

TEST	Specification
Appearance (Color)	White
Appearance (Form) Powder, Crystalline Powder or Granular Powder	Conforms to Requirements
Infrared spectrum	Conforms to Structure
Viscosity At 125 Degrees Celsius	75 - 200 cps

Specification: PRD.0.ZQ5.10000048071

Sigma-Aldrich warrants, that at the time of the quality release or subsequent retest date this product conformed to the information contained in this publication. The current Specification sheet may be available at Sigma-Aldrich.com. For further inquiries, please contact Technical Service. Purchaser must determine the suitability of the product for its particular use. See reverse side of invoice or packing slip for additional terms and conditions of sale.