

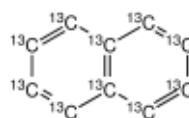
3050 Spruce Street, Saint Louis, MO 63103, USA

Website: www.sigmaaldrich.comEmail USA: techserv@sial.comOutside USA: eurtechserv@sial.com

Product Specification

Product Name:
Naphthalene-¹³C₁₀ - 99 atom % ¹³C

Product Number: 579653
CAS Number: 219526-41-7
Formula: ¹³C₁₀H₈
Formula Weight: 138.00 g/mol



TEST	Specification
Appearance (Color)	White
Appearance (Form)	Powder
Purity (GC)	≥ 99.0 %
Proton NMR Spectrum	Conforms to Structure
Carbon NMR Spectrum	Conforms to Structure
¹³ C Enrichment	≥ 99.0 atom %
Initial Melting Point	
Final Melting Point	

Specification: PRD.0.ZQ5.10000103469

Sigma-Aldrich warrants, that at the time of the quality release or subsequent retest date this product conformed to the information contained in this publication. The current Specification sheet may be available at Sigma-Aldrich.com. For further inquiries, please contact Technical Service. Purchaser must determine the suitability of the product for its particular use. See reverse side of invoice or packing slip for additional terms and conditions of sale.

