

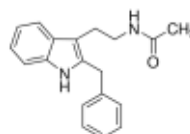
3050 Spruce Street, Saint Louis, MO 63103, USA

Website: www.sigmaldrich.comEmail USA: techserv@sial.comOutside USA: eurtechserv@sial.com

Product Specification

Product Name:
Luzindole - ≥90%

Product Number: L2407
CAS Number: 117946-91-5
MDL: MFCD00672498
Formula: C₁₉H₂₀N₂O
Formula Weight: 292.37 g/mol
Storage Temperature: -20 °C



TEST	Specification
Appearance (Color)	White to Yellow
Appearance (Form)	Powder or Crystals
Solubility (Color)	Colorless to Yellow
Solubility (Turbidity)	Clear
5 mg/ml DMSO	
¹ H NMR Spectrum	Conforms to Structure
Purity (HPLC)	≥ 90 %

Specification: PRD.1.ZQ5.10000039052

Sigma-Aldrich warrants, that at the time of the quality release or subsequent retest date this product conformed to the information contained in this publication. The current Specification sheet may be available at Sigma-Aldrich.com. For further inquiries, please contact Technical Service. Purchaser must determine the suitability of the product for its particular use. See reverse side of invoice or packing slip for additional terms and conditions of sale.