

3050 Spruce Street, Saint Louis, MO 63103, USA

Website: www.sigmaaldrich.com

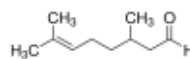
Email USA: techserv@sial.com

Outside USA: eurtechserv@sial.com

Product Specification

Product Name:
(±)-Citronellal - ≥85%, FG

Product Number: W230707
CAS Number: 106-23-0
MDL: MFCD00038090
Formula: C10H18O
Formula Weight: 154.25 g/mol



TEST	Specification
Appearance (Color)	Colorless to Pale Yellow
Appearance (Form)	Liquid
Refractive index at 20 ° C	1.446 - 1.456
Infrared spectrum	Conforms to Structure
GC (% Major 1)	≥ 85.0 %
Citronellal (sum of isomers)	
GC (% Minor 1)	≤ 14
mixture of terpenoid materials	
Total Purity	≥ 95.0 %
(sum of major and minor components)	
Optical Rotation	-1.0 - 11.0 deg
c = Neat	
Specific Gravity	0.850 - 0.860
at 25 Degrees Celsius	
Solubility (Turbidity)	Clear
c = 1mL / 5mL; 70% Ethanol	
Solubility (Color)	Colorless to Faint Yellow
Acid Value	≤ 3.0
Arsenic (As)	≤ 3 ppm
Cadmium (Cd)	≤ 1 ppm
Mercury (Hg)	≤ 1 ppm
Lead (Pb)	≤ 10 ppm
Expiration Date Period	-----
3 Years	

Sigma-Aldrich warrants, that at the time of the quality release or subsequent retest date this product conformed to the information contained in this publication. The current Specification sheet may be available at Sigma-Aldrich.com. For further inquiries, please contact Technical Service. Purchaser must determine the suitability of the product for its particular use. See reverse side of invoice or packing slip for additional terms and conditions of sale.

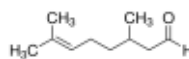
3050 Spruce Street, Saint Louis, MO 63103, USA

Website: www.sigmaaldrich.comEmail USA: techserv@sial.comOutside USA: eurtechserv@sial.com

Product Specification

Product Name:
(±)-Citronellal - ≥85%, FG

Product Number: W230707
CAS Number: 106-23-0
MDL: MFCD00038090
Formula: C₁₀H₁₈O
Formula Weight: 154.25 g/mol



TEST

Specification

Specification: PRD.3.ZQ5.10000008642

Sigma-Aldrich warrants, that at the time of the quality release or subsequent retest date this product conformed to the information contained in this publication. The current Specification sheet may be available at Sigma-Aldrich.com. For further inquiries, please contact Technical Service. Purchaser must determine the suitability of the product for its particular use. See reverse side of invoice or packing slip for additional terms and conditions of sale.