

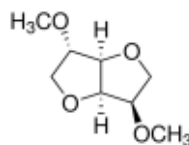
3050 Spruce Street, Saint Louis, MO 63103, USA

Website: www.sigmaldrich.comEmail USA: techserv@sial.comOutside USA: eurtechserv@sial.com

Product Specification

Product Name:
Isosorbide dimethyl ether - 98%

Product Number: 247898
CAS Number: 5306-85-4
MDL: MFCD00064828
Formula: C₈H₁₄O₄
Formula Weight: 174.19 g/mol



TEST	Specification
Appearance (Color)	Colorless to Light Yellow
Appearance (Form)	Liquid
Infrared Spectrum	Conforms to Structure
Purity (GC)	≥ 97.5 %
Optical Rotation c = 2%, CHCL ₃	96 - 99 deg

Specification: PRD.0.ZQ5.10000097474

Sigma-Aldrich warrants, that at the time of the quality release or subsequent retest date this product conformed to the information contained in this publication. The current Specification sheet may be available at Sigma-Aldrich.com. For further inquiries, please contact Technical Service. Purchaser must determine the suitability of the product for its particular use. See reverse side of invoice or packing slip for additional terms and conditions of sale.