

3050 Spruce Street, Saint Louis, MO 63103, USA

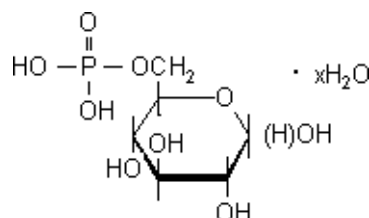
Website: www.sigmaldrich.comEmail USA: techserv@sial.comOutside USA: eurtechserv@sial.com

Product Specification

Product Name:

D-Glucose 6-phosphate solution - ~1 M in H₂O (approx. 260 mg per ml)

Product Number: G7772
CAS Number: 56-73-5
MDL: MFCD00136040
Formula: C₆H₁₃O₉P
Formula Weight: 260.14 g/mol
Storage Temperature: -20 °C



TEST	Specification
Appearance (Turbidity)	Clear
Appearance (Color)	Colorless
Appearance (Form)	Liquid
ICP-for P (mg phosphorus/mL)	29 - 36
Molar Concentration in H ₂ O	0.95 - 1.18 M
Purity (TLC)	≥ 99 %

Specification: PRD.0.ZQ5.10000029318

Sigma-Aldrich warrants, that at the time of the quality release or subsequent retest date this product conformed to the information contained in this publication. The current Specification sheet may be available at Sigma-Aldrich.com. For further inquiries, please contact Technical Service. Purchaser must determine the suitability of the product for its particular use. See reverse side of invoice or packing slip for additional terms and conditions of sale.