

3050 Spruce Street, Saint Louis, MO 63103, USA

Website: www.sigmaldrich.comEmail USA: techserv@sial.comOutside USA: eurtechserv@sial.com

Product Specification

Product Name:

Dichloro(1,5-cyclooctadiene)platinum(II)

Product Number:

244937

CAS Number:

12080-32-9

MDL:

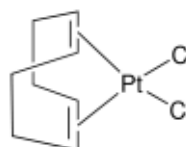
MFCD00012413

Formula:

C₈H₁₂Cl₂Pt

Formula Weight:

374.16 g/mol



TEST

Specification

Appearance (Color)

White to Pale Yellow

Appearance (Form)

Powder or Crystals

Infrared Spectrum

Conforms to Structure

Carbon

25.0 - 26.3 %

Specification: PRD.1.ZQ5.10000025065

Sigma-Aldrich warrants, that at the time of the quality release or subsequent retest date this product conformed to the information contained in this publication. The current Specification sheet may be available at Sigma-Aldrich.com. For further inquiries, please contact Technical Service. Purchaser must determine the suitability of the product for its particular use. See reverse side of invoice or packing slip for additional terms and conditions of sale.