

3050 Spruce Street, Saint Louis, MO 63103, USA

Website: [www.sigmaldrich.com](http://www.sigmaldrich.com)Email USA: [techserv@sial.com](mailto:techserv@sial.com)Outside USA: [eurtechserv@sial.com](mailto:eurtechserv@sial.com)

## Product Specification

Product Name:

(S,R,R)-(+)-(3,5-Dioxa-4-phosphacyclohepta[2,1-a:3,4-a']dinaphthalen-4-yl)bis(1-phenylethyl)amine - 95% (HPLC)

Product Number:

665363

CAS Number:

497883-22-4

MDL:

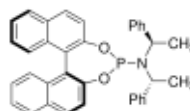
MFCD08561138

Formula:

C36H30NO2P

Formula Weight:

539.60 g/mol



### TEST

### Specification

Appearance (Color)

White to Off-White

Appearance (Form)

Powder

Proton NMR Spectrum

Conforms to Structure

Phosphorus NMR Spectra

Conforms to Structure

Optical Rotation

410.0 - 450.0 deg

c = 0.8%; Chloroform

Purity (HPLC)

≥ 94.5 %

Specification: PRD.3.ZQ5.10000036067

Sigma-Aldrich warrants, that at the time of the quality release or subsequent retest date this product conformed to the information contained in this publication. The current Specification sheet may be available at [Sigma-Aldrich.com](http://Sigma-Aldrich.com). For further inquiries, please contact Technical Service. Purchaser must determine the suitability of the product for its particular use. See reverse side of invoice or packing slip for additional terms and conditions of sale.