

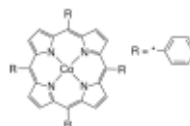
3050 Spruce Street, Saint Louis, MO 63103, USA

Website: www.sigmaldrich.comEmail USA: techserv@sial.comOutside USA: eurtechserv@sial.com

Product Specification

Product Name:
5,10,15,20-Tetraphenyl-21H,23H-porphine cobalt(II) - Dye content 85 %

Product Number: 252190
CAS Number: 14172-90-8
MDL: MFCD00010725
Formula: C₄₄H₂₈CoN₄
Formula Weight: 671.65 g/mol



TEST	Specification
------	---------------

Appearance (Color)	Brown to Dark Purple or Dark Red
Appearance (Form)	Conforms to Requirements
Crystals or Crystalline Powder	
Infrared spectrum	Conforms to Structure
Wavelength	407 - 413 nm
Extinction Coefficient	≥ 200000
c = 0.002g/l, Ether	
Carbon	
Typically > 66.9%	
Nitrogen	
Typically > 7.1%	
Dye Content	≥ 85.0 %

Specification: PRD.1.ZQ5.10000036486

Sigma-Aldrich warrants, that at the time of the quality release or subsequent retest date this product conformed to the information contained in this publication. The current Specification sheet may be available at Sigma-Aldrich.com. For further inquiries, please contact Technical Service. Purchaser must determine the suitability of the product for its particular use. See reverse side of invoice or packing slip for additional terms and conditions of sale.