

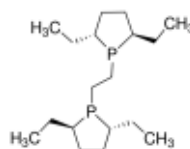
3050 Spruce Street, Saint Louis, MO 63103, USA

Website: [www.sigmaldrich.com](http://www.sigmaldrich.com)Email USA: [techserv@sial.com](mailto:techserv@sial.com)Outside USA: [eurtechserv@sial.com](mailto:eurtechserv@sial.com)

## Product Specification

Product Name:  
(+)-1,2-Bis[(2R,5R)-2,5-diethylphospholano]ethane - kanata purity

**Product Number:** 668478  
**CAS Number:** 136705-62-9  
**MDL:** MFCD01073768  
**Formula:** C<sub>18</sub>H<sub>36</sub>P<sub>2</sub>  
**Formula Weight:** 314.43 g/mol



### TEST

### Specification

Appearance (Color)	Colorless to Yellow
Appearance (Form)	Liquid
Proton NMR spectrum	Conforms to Structure
Phosphorus NMR Spectra	Conforms to Structure
Optical Rotation c = 1%; Chloroform	220.0 - 234.0 deg
Purity (GC)	≥ 96.5 %

Specification: PRD.0.ZQ5.10000053747

Sigma-Aldrich warrants, that at the time of the quality release or subsequent retest date this product conformed to the information contained in this publication. The current Specification sheet may be available at [Sigma-Aldrich.com](http://Sigma-Aldrich.com). For further inquiries, please contact Technical Service. Purchaser must determine the suitability of the product for its particular use. See reverse side of invoice or packing slip for additional terms and conditions of sale.