

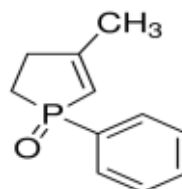
3050 Spruce Street, Saint Louis, MO 63103, USA

Website: www.sigmaldrich.comEmail USA: techserv@sial.comOutside USA: eurtechserv@sial.com

Product Specification

Product Name:
3-Methyl-1-phenyl-2-phospholene 1-oxide - 85%, technical grade

Product Number: 191744
CAS Number: 707-61-9
MDL: MFCD00014518
Formula: C₁₁H₁₃OP
Formula Weight: 192.19 g/mol



TEST

Specification

Appearance (Color)	Colorless to Yellow
Appearance (Form) Liquid, Solid or Powder	Conforms to Requirements
Proton NMR spectra	Conforms to Structure
Carbon	57.7 - 79.7 %
Purity (HPLC)	≥ 84.0 %

Specification: PRD.0.ZQ5.10000042928

Sigma-Aldrich warrants, that at the time of the quality release or subsequent retest date this product conformed to the information contained in this publication. The current Specification sheet may be available at Sigma-Aldrich.com. For further inquiries, please contact Technical Service. Purchaser must determine the suitability of the product for its particular use. See reverse side of invoice or packing slip for additional terms and conditions of sale.